

HIGHLIFE® COLLECTION

# JETSETTER®



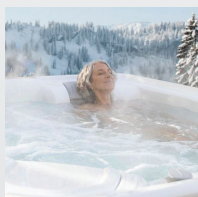
FreshWater®  
Salt System  
Included



100% Filtration  
SilentFlo Circulation



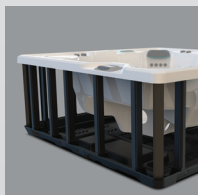
Moto-Massage® DX



Super Energy  
Efficient



Color LCD  
Touchscreen



Polymer Substructure  
& Base Pan



*Shown with Alpine White Shell  
and Blackwood Cabinet*

**People**  
3 Seats

**Seating**  
Lounge

**Jets**  
22 Jets

**Voltage**  
115 V or 230 V

**Size**

7' x 5'8" x 33" | 213 cm x 173 cm x 84 cm

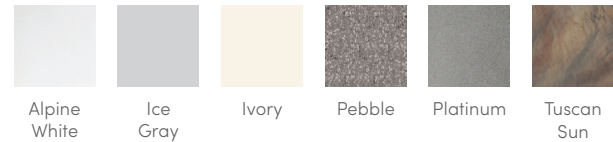
**Water Care**

FreshWater® Salt System Included

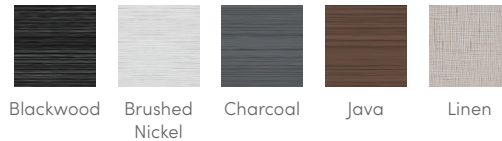
# HIGHLIFE® COLLECTION JETSETTER®



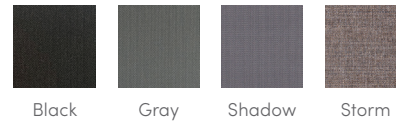
## SHELL COLORS



## CABINET COLORS



## COVER COLORS



## CABINET AND SHELL COLOR OPTIONS\*

Cabinet Colors	Java	Charcoal	Blackwood	Linen	Brushed Nickel
<b>Shell Colors</b>	Alpine White Ice Gray Ivory Tuscan Sun Pebble	Alpine White Ice Gray Platinum Tuscan Sun Pebble	Alpine White Ice Gray Platinum	Alpine White Ivory Tuscan Sun Pebble	Alpine White Ice Gray Platinum

## LEGENDARY MESSAGE

### 22 Personalized-Control Jets

- 1 Moto-Massage® DX (2)
- 2 SoothingStream®
- 1 JetStream®
- 1 Rotary Hydromassage
- 2 Rotary Precision®
- 14 Directional Precision®

## EASY WATER CARE

<b>Water Care System</b>	FreshWater® IQ System Salt System Included Smart Monitoring System Optional
<b>Filtration System</b>	100% No-bypass Filtration Exclusive, High-flow Tri-X® Filters 195 sq. ft. Filtration Area

## LEADING ENERGY EFFICIENCY

<b>Jet Pump</b>	Wavemaster® 7000; One-speed, 1.65 HP Continuous Duty, 3.5 HP Breakdown Torque
<b>Circulation Pump</b>	SilentFlo® 5000 Quiet Continuous Filtration
<b>Heater</b>	No-Fault® 1,500 W / 115 V or 6,000 W / 230 V
<b>Insulation</b>	Multiple Layers of Foam Insulation; Certified to California Energy Commission (CEC) and APSP 14 energy efficiency standards for portable spas
<b>Cover</b>	WeatherPro™ 4" Tapered Custom-Fit with Hinge Seal

## SIZE

<b>Dimensions</b>	7' x 5'8" x 33" / 213 cm x 173 cm x 84 cm
-------------------	---

## CAPACITY

<b>Seating Capacity</b>	3 seats with lounge
<b>Water Capacity</b>	245 gallons / 925 liters
<b>Weight</b>	500 lbs. / 225 kg dry; 3,070 lbs. / 1,390 kg filled**

## ADDITIONAL FEATURES

<b>Smart Spa Technology*</b>	Hot Spring Spas App Powered by the Connected Spa Kit
<b>Cover Lifters*</b>	CoverCradle®, CoverCradle II, Lift 'n Glide®, or UpRite® (F/B only)
<b>Steps*</b>	Highlife Collection Steps (Blackwood, Charcoal, Java, Linen)
<b>Entertainment*</b>	Bluetooth® Wireless Sound System
<b>Control System</b>	IQ 2020® with Color LCD Touchscreen 115 V / 20 amp (includes GFCI protected power cord) or 230 V / 50 amp, 60 Hz***
<b>Lighting System</b>	Luminescence® multi-color four-zone

\*Optional Accessories

\*No special orders or shell substitutions available. Actual colors and products may vary from print representation. See dealer to verify.

\*\*Includes water and 3 adults weighing 175 lbs. each. \*\*\*G.F.C.I. protected sub-panel required in 230 V mode.